

# SPECIFICATION FOR APPROVAL

## 承 认 书

CUSTOMER

客户名称:

NUMBER

编 号:

DESCRIPTION

品 名: 贴片共模滤波器

QUANTITY

数 量:

PART NO.

型 号: BCCM7660-2-301T01

DATE

日 期:

CUSTOMER PART NO.

客户料号:

NOTE

注 解:

APPROVAL SIGNATURE

客户承认签章

APPROVED BY

核 准

Q. C. DEPT.

品 管

CHECKED BY

核 查

DRAWN BY

制 作

深圳市宝创达电子有限公司

SHENZHEN BAOCHUANGDA ELECTRONICS CO., LTD.

地址: 深圳市龙华区观澜街道横坑河西村77号A栋2楼

Add: 2nd floor building A no.77 hexi village guanlan

Street longhua district shenzhen

Tel: 0755-29736760

Fax: 0755-28056434

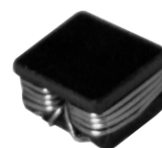
Http:// www.bcdcn.com

# BCCM7660-2-301T01

## DC COMMON MODE FILTER

### FEATURES

- A chip-type common mode filter for large current applications.  
Common mode impedance surpasses 300  $\Omega$  at 100MHz.  
Noise is greatly suppressed.
- Capable of handling the highest current(up to 3.4A) of any chip-type common mode filter.
- Height and size have been considered ,resulting in a compact and light-weight choke coil.Applicable for the miniaturization required to reduce the size and weight of portable equipment.
- The products contain no lead and also support lead-free soldering.
- The product does not contain regulatde substances that are slated to be included in ROHS.



### APPLICATIONS

Used for power line noise suppression for any electronic-devices  
Used to counter adapter/battery line noise for relatively large electronic devices such as notebook PCs, stand-alone word processors, etc

### TEMPERATURE RANGES

Operating	-40to+125°C
Storage(After mount)	-40to+125°C

### Part Number System

<u>BCCM</u>	<u>7660</u>	<u>-2</u>	<u>-301</u>	<u>T</u>	<u>01</u>
①	②	③	④	⑤	⑥

- ① Type:BCCM  
② External Dimensions(L×W) (mm):7.6\*6.0  
③ Number of Lines: 2  
④ Impedance:301=300  $\Omega$   
⑤ Packing:Tape & Reel  
⑥ Management Symbol:01

### ELECTRICAL CHARACTERISTICS

Part No.	Impedance ( $\Omega$ )min[at 100MHz]	DC resistance (m $\Omega$ )max[1 line]	Rated current Idc(A)max	Insulation resistance (M $\Omega$ )min
BCCM7660-2-301T01	300	30	3.4	10

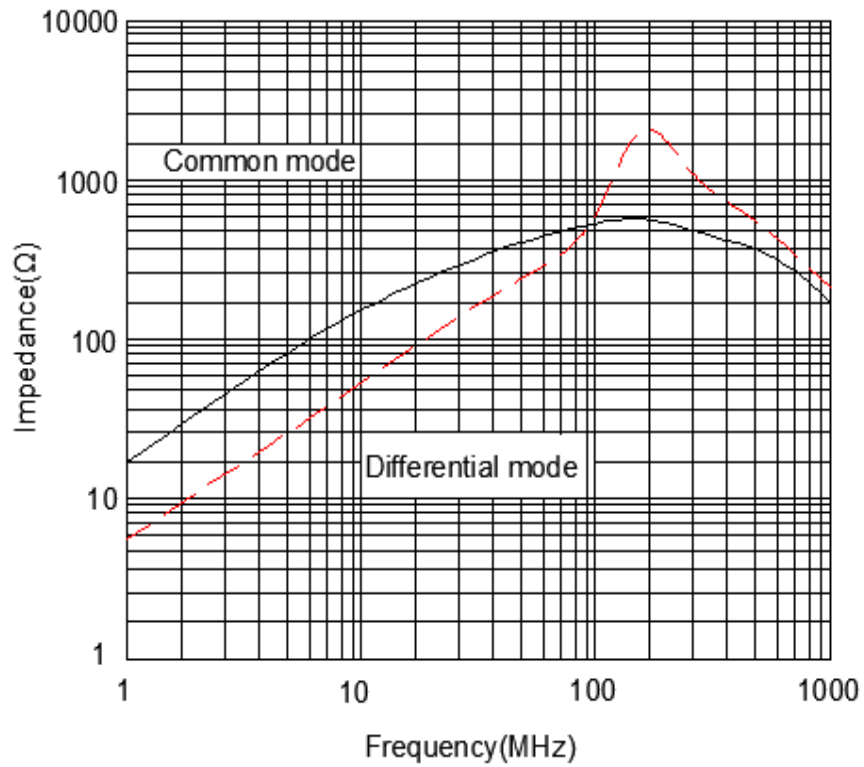
# BCCM7660-2-301T01

## DC COMMON MODE FILTER

### TYPICAL ELECTRICAL CHARACTERISTICS

#### IMPEDANCE vs. FREQUENCY CHARACTERISTICS

BCCM7660-2-301T01

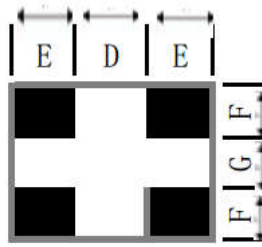
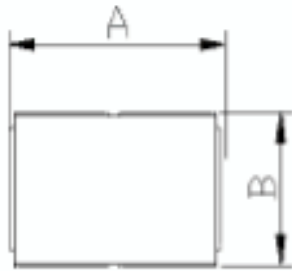


# BCCM7660-2-301T01

## DC COMMON MODE FILTER

### SHAPES AND DIMENSIONS/CIRCUIT DIAGRAM/RECOMMENDED PC BOARD PATTERN(REFLOW SOLDERING)

#### ◆ Dimensions (mm)



UNIT: mm

A:  $7.6 \pm 0.5$

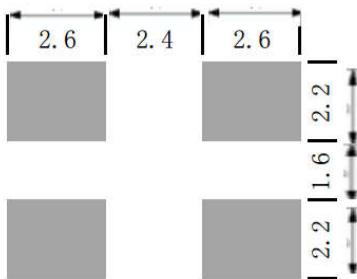
B:  $6.0 \pm 0.5$

C: 4.3 (MAX)

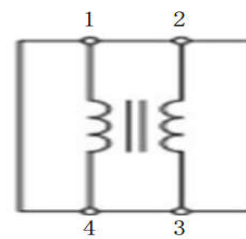
D: 2.60 E: 2.50

F: 2.10 G: 1.80

#### ◆ Land Pattern (mm)



#### ◆ Schematics (Bottom)

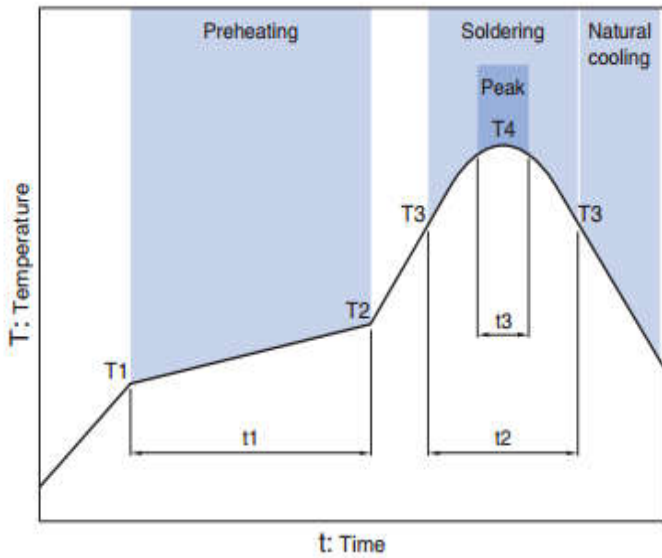


No polarity

BCCM7660-2-301T01

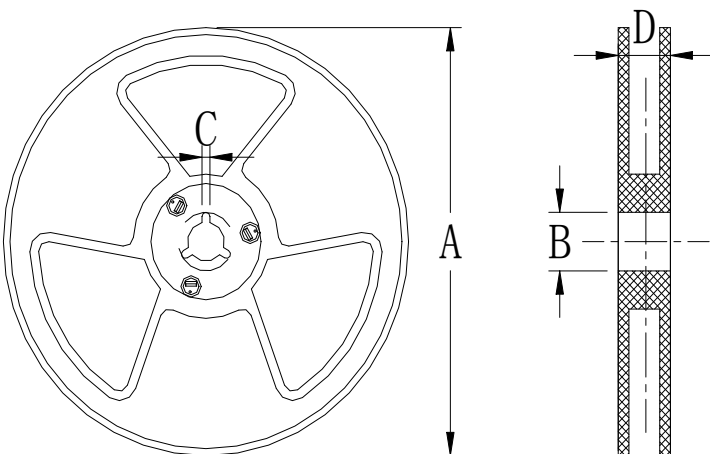
## DC COMMON MODE FILTER

### Recommended Reflow Temperature Curve



Preheating			Soldering		Peak	
Temp.	Time		Temp.	Time	Temp.	Time
T1	T2	t1	T3	t2	T4	t3
150°C	180°C	60 to 120s	230°C	10 to 30s	245°C	5s

Package  
size (mm)



Specs size	13"	7"
A	$\Phi 330 \pm 2.0$	$\Phi 178 \pm 2.0$
B	$\Phi 90 \pm 2.0$	
C	2.3	
D	21.5	